



San Bernardino International Airport Authority

Building 795

Construction Safety and Phasing Plan

1601 E. Third St.
San Bernardino, California 92408

As an authorized representative of _____, (Company)
I _____ (Name & Title) have read and
understood the requirements set forth in the Construction Safety and Phasing Plan and will
comply with all requirements and contained herein during the course of the Construction
Project.

X

Authorized Contractor Representative Signature

Title: _____

Date: _____

Table of Contents

| | |
|--|----|
| Statement | 3 |
| 1. Scope of Work | 3 |
| 2. Contractor Access and Parking | 3 |
| a) Vehicle and Pedestrian Operations | 4 |
| b) Vehicle Incidents and Accidents | 4 |
| 3. Wildlife Management | 5 |
| 4. Foreign Object Debris (FOD) Management | 5 |
| 5. Hazardous Materials (HAZMAT) management | 5 |
| a) List of Responsible Representatives/points of contact | 6 |
| 6. Notification of Construction Activities | 6 |
| a) Emergency Notification Procedure for Fire, Medical and Police Response | 6 |
| b) Coordination with Aircraft Rescue and Fire Fighting (ARFF) Personnel | 6 |
| c) Notification to the FAA | 7 |
| 7. Underground Utilities | 7 |
| 8. Penalties | 7 |
| 10. Special Conditions | 8 |
| 11. Hazard Marking and Lighting | 8 |
| 12. Runway and Taxiway Visual Aids | 8 |
| 13. Marking and signs for access routes | 9 |
| 14. Protection of Taxiway Object Free Area (TOFA) and Taxiway Safety Area (TSA) | 9 |
| Exhibit 1 | 10 |
| Layout | 10 |
| Exhibit A | 11 |
| Hazard Marking and Lighting | 11 |
| Exhibit B | 12 |
| List of Responsible Representative/Points of Contacts | 12 |

San Bernardino International Airport Authority

Project Name: Building 795 Construction

Statement

Hazardous practices and marginal conditions created by construction activities can decrease or jeopardize operational safety on the Airport. To minimize disruption of normal aircraft operations and to avoid situations that compromise the Airport's operational safety, Airport Operations must carefully plan, schedule, and coordinate construction activities.

This Construction Safety Plan, as required by FAA Advisory Circular (AC) 150/5370-2F, stipulates responsibilities, task, and methods to be completed by the Contractor in conjunction with the Airport in order to maintain operational safety on the Airport during construction. All facets of the Building 795 Construction Project shall conform to this Construction Safety Plan.

1. Scope of Work

The 795 Construction project will consist of bringing the building up to FEDEX specifications.

2. Contractor Access and Parking

Particular attention will be paid to the stockpiling of materials on the Airport, as well as movement and parking of equipment that may interfere with line of sight from the San Bernardino Air Traffic Control Tower (SBD ATCT) or with electronic emissions of radio and navigational equipment. Specific parking locations for vehicles, equipment and storage for construction materials will be approved by Airport Operations. The following are conditions that the Contractor must meet regarding the parking of vehicles and equipment:

- The Contractor's Yard will be located on North West side of building 795, with access provided through Gate 2. See Exhibit 1.
- All Contractor employee's personal vehicles must be parked outside of the AOA, and inside of the Contractor's Yard during working hours.
- Construction vehicles and, where applicable, construction equipment will be parked and serviced in the Contractor's Yard. The Airport may designate other additional parking areas, as needed, based on the requirements of this Construction Safety and Phasing Plan.
- Construction vehicles will not be parked or serviced on any portion of a closed or open taxiway, closed or open portion of the Runway, Runway Obstacle Free Zone, Runway Object Free Area, Taxiway Object Free Area, or any Taxiway Safety Area.

- Contractor must park all equipment and vehicles that leak oil or any other fluid on containment sheeting to prevent staining of paved surfaces and contamination into the soil or storm water system.
- It will be mandatory for the Contractor to coordinate and receive escort to all movement area construction sites.

a) Vehicle and Pedestrian Operations

Contractor access outside of the project area and designated haul routes is strictly prohibited.

Driver's Safety Training will be conducted by the Airport Operations Department to train all construction personnel who will be working within the Airport Operations Area (AOA) without an escort. The following will be described during the safety meeting:

- Proper vehicle operations on Ramps and Taxiways.
- Penalties for non-compliance with driving Rules and Regulations.
- Escort procedures for construction vehicles requiring access inside the AOA.
- Monitoring procedures to ensure that construction vehicles within the AOA are in compliance with Airport Vehicle Rules and Regulations.
- Guidance to flag persons directing traffic at haul routes crossing active taxiways.
- Appropriate vehicle marking and airport safety equipment required as described in Exhibit A of this Construction Safety and Phasing Plan.
- The speed limit on all ramps and vehicle parking areas is 15mph, the speed limit along haul routes and on the movement area is 15mph.
- Vehicle driver situational awareness, to include, observation of aircraft, taxiways, and open areas to aircraft operations.
- Escort procedures.
- All aircraft have the right of way.

The Contractor shall ensure that all access points to the Airport for the access of construction vehicles and personnel are always secured. The contractor shall also ensure that Airport access is not provided to any vehicle not positively identified as part of the construction project during the course of this project.

The Contractor shall ensure that all construction employees always carry and appropriately display airport security badges while on the Airport.

b) Vehicle Incidents and Accidents

The driver of any motor vehicle involved in an accident while on the AOA, which results in injury or death to any person, or damage to any property must report the accident by contacting

Airport Operations at (909) 556-1383. In the event of injury, the driver shall call 911 and contact Airport Operations at (909) 556-1383, and render assistance, if able, until emergency vehicles arrive.

All persons involved in any accident occurring on the Airport shall make a full report thereof to Airport Operations and the Airport Security Department as soon after the accident as possible and before leaving the Airport.

3. Wildlife Management

Interaction of wildlife with air traffic can be dangerous. It is critical that all reasonable efforts be made to reduce the potential for attraction of wildlife to the construction work area and consequently the Airport. This includes proper house-keeping techniques to remove any scrap food, structures, piles of materials or standing water that might attract wildlife, and closing trash containers. If wildlife issues do occur, they will be addressed during weekly construction meetings or immediately, if necessary, by Airport Operations at the construction site.

Protected habitat areas exists on airport property. Contractor shall keep clear of these areas at all times during the duration of this project.

4. Foreign Object Debris (FOD) Management

The Contractor will respond as needed or as directed by Airport Operations to remove FOD generated by construction activities. Airport Operations personnel in conjunction with the Contractor will conduct periodic daily inspections to check for the presence of FOD. Weekly progress meetings will emphasize the mitigation and control of FOD at which time Airport Operations will inform the Contractor and if needed request a coordination meeting for any special FOD attention that is required.

5. Hazardous Materials (HAZMAT) management

All lubricating liquids and solids (oils and greases) shall be secured and contained in dry areas until used by trained personnel. All waste material shall be properly disposed of in accordance with all applicable laws. In the event of a hazardous material spill at the Airport, the Fire Department will be contacted by Airport Operations. The construction contractor must keep a spill kit for response and take appropriate measures to seal off the spill area and keep persons and equipment away from the site. Once the spill has been contained, the Contractor will take the appropriate measures to have the material removed from the site. Construction equipment fuel may be kept at the Contractor's yard and made available to Contractor's employees only. All fuel will be stored in a manner that prevents leakage, and provides secondary containment.

No hazardous material shall be stored or used near any of the Airport's storm water drain inlets.

a) List of Responsible Representatives/points of contact

A complete list of 24 hour emergency numbers will be circulated between the Airport, construction personnel and engineers prior to commencement of construction. Exhibit B will include the Emergency Notification List furnished by the contractor once the Contractor's notice to proceed has been issued. The Contractor shall provide a complete list of phone numbers of its responsible personnel, each of whom may be contacted in case of emergency prior to the commencement of construction, including on-call personnel capable of responding to hazardous conditions such as spills.

6. Notification of Construction Activities

To ensure prompt notification to all Airport tenants and users about the construction project, Airport Operations will utilize the NOTAM system through a Flight Service Station. Airport Operations personnel will issue all required NOTAM's. Work requiring a NOTAM, such as Runway/Taxiway closures, NAVAID outages, airspace obstructions, such as concrete booms, must be communicated to Airport Operations a minimum of 48 hours in advance.

Contractor shall provide a detailed weekly work schedule in addition to a monthly progress schedule during weekly progress meetings. Based on the construction schedule provided Airport Operations will notify all affected parties, including SBD ATCT, ARFF, maintenance, and tenants. Any change in the construction schedule must be immediately provided to operations to ensure sufficient notification is provided to affected parties, with 48hrs notice to Airport Operations.

a) Emergency Notification Procedure for Fire, Medical and Police Response

In the event of a medical emergency the Contractor shall contact 911, or Airport Operations who will contact emergency services. It is necessary to contact Airport Operations in order to provide access for emergency personnel to the accident site. For police response to the construction site contact Airport Operations. Airport Operations will contact the Airport's Police Sergeant or on-duty Security Officer, to escort responding Police units to affected area.

b) Coordination with Aircraft Rescue and Fire Fighting (ARFF) Personnel

Airport Operations personnel will conduct all emergency ARFF notification. Notification will be conducted expeditiously through the Fire Captain or on-duty Fire Department personnel. In the event that water is shutoff to a fire hydrant or construction affects AOA emergency access routes ARFF will be notified by Airport Operations. Details of specific work affecting water sources, and closures of the Runway or taxiways should be provided by the Contractor during

weekly progress meetings or coordination meetings. In the event of emergency shut off of water, the Contractor shall notify Airport Operations immediately.

c) Notification to the FAA

As necessary, Airport Operations will inform the Federal Aviation Administration (FAA) of any emergencies by contacting the FAA Airports Regional Office. Any activity affecting navigable airspace as defined in FAR Part 77, including crane activity, the Contractor is required to notify Airport Operations 48 hours in advance, or any other equipment affecting navigable airspace for issuance of NOTAM.

7. Underground Utilities

Prior to any excavation, effort shall be made to determine whether underground installation (including: sewer, telephone, water, fuel, electric line, etc.) will be encountered, and if so, where such underground installations are located. Proper procedures will be followed to review all appropriate utility plans to avoid damage to existing utilities, cable, wires, conduits, pipelines, or other underground facilities. If utilities are located in any construction area, the Contractor shall properly mark them with approved temporary parking paint. Additionally, the Contractor shall immediately notify Airport Operations personnel when such underground facilities are discovered.

8. Penalties

Due to the safety and security precautions necessary at SBD, failure of the Contractor to adhere to the prescribed requirements/regulations has consequences that may jeopardize the health, welfare and lives of the customers and employees at SBD, as well as the Contractor's own employees. Therefore, if the Contractor is found to be in non-compliance Airport Operations will issue a citation. Airport Operations and Security personnel will conduct administrative inspections and enforce violations regarding Rules and Regulations for SBD. All violators shall be subject to citation. A citation shall be issued for observed violations of any Rules, Regulations, local, state, and federal laws governing the Airport. Penalty provisions for noncompliance will be as follows:

- A \$7,500/per day charge will be assessed to the Contractor for failure to comply with the Construction Safety and Phasing Plan.
- Personnel who enter into restricted Environmentally Sensitive Habitat Area will be removed from the Airport property.
- Personnel who enter into restricted endangered species zones may incur monetary penalties brought by the United States fish and Wildlife Agency.
- A \$1,000 charge per radio shall be assessed to the Contractor for any airport loaned radios that are lost or damaged.

- Construction personnel driving erratically on the airfield, exceeding the speed limits, or violating any other Airport driving Rule or Regulation shall be removed from the Project.

10. Special Conditions

Emergencies and operating conditions may necessitate sudden changes, both in airport operations and in the operations of the Contractor. Aircraft operations shall always have priority over all construction operations. Should the Taxiways be required for the use of aircraft or if Airport Operations deems construction activity to be a hazard to the Runway, taxiways, aircraft or other airport operations, the Contractor shall suspend construction activity, remove personnel, equipment, and materials from the construction site to a safe distance and stand by until Airport Operations determines that it is safe to proceed.

Throughout the duration of the job, any practice or situation that Airport Operations determines to be unsafe or a hindrance to regular airport operations, shall be immediately rectified. Any violation of the safety requirements contained in this document shall be considered a violation of the Construction Safety and Phasing Plan itself and shall be sufficient cause for halting the work without extending the time limit of the job.

11. Hazard Marking and Lighting

All vehicles operating within the AOA must have either a flashing orange/ amber Omni directional beacon or an orange and white checkered flag securely attached to the highest point of the vehicle. Vehicle operations during hours of darkness must have an Omni directional flashing beacon. Escorted vehicles must also maintain an Omni directional flashing beacon or an orange and white checkered flag atop their vehicle during daylight hours. Checkered flags shall be 3 feet by 3 feet, orange and white with each box being one-foot square, as shown in Exhibit A.

12. Runway and Taxiway Visual Aids

All airport markings, lighting, signs, and visual NAVAIDs that are in operation must be clear from all obstructions. All temporary markings, signs, lights, or other visual aids must be adequately secured in place to prevent prop wash, jet blast, wing vortices, or other wind currents from damaging, displacing or otherwise creating a hazard to operations.

- Temporarily Closed Taxilane- The contractor shall be responsible for installing and maintaining taxiway closure markers at the entrance to the closed portion of the taxilane. The contractor shall also install low-profile barricades at the entrance to the closed portion of taxiway from an adjacent taxiway. Barricades shall be installed outside all active taxiway safety areas. See details on Exhibit B for low-profile barricades required.

13. Marking and signs for access routes

If needed, the Contractor will coordinate with Airport Operations to supply 28 inch tall traffic cones having a 6 inch band of red retroreflective type 2 engineer grade material and weighted bases to delineate access routes and closed taxiways.

14. Protection of Taxiway Object Free Area (TOFA) and Taxiway Safety Area (TSA)

No construction vehicles will be located within an active: taxiway; taxiway safety area; or taxiway object-free area at any time other than during approved haul route crossings as described above. No construction work will be allowed to take place within any active taxiway or taxiway safety area. Signs need for access routes shall not be hand lettered. Any signs construction vehicle signs required, when possible must comply with Federal Highway Administration Manual on Uniform Traffic Control Devices. Any sign posted must be placed in a manner that does not conflict with airport signage or mislead, confuse, or deceive pilots.

Exhibit 1 Layout

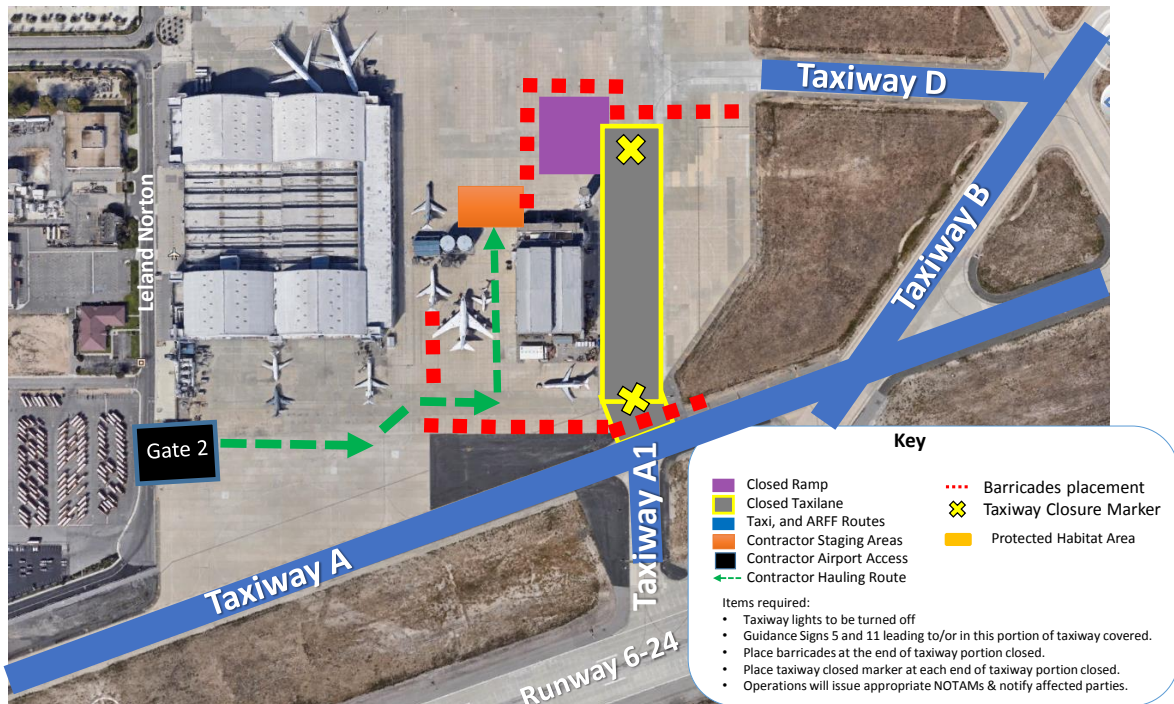
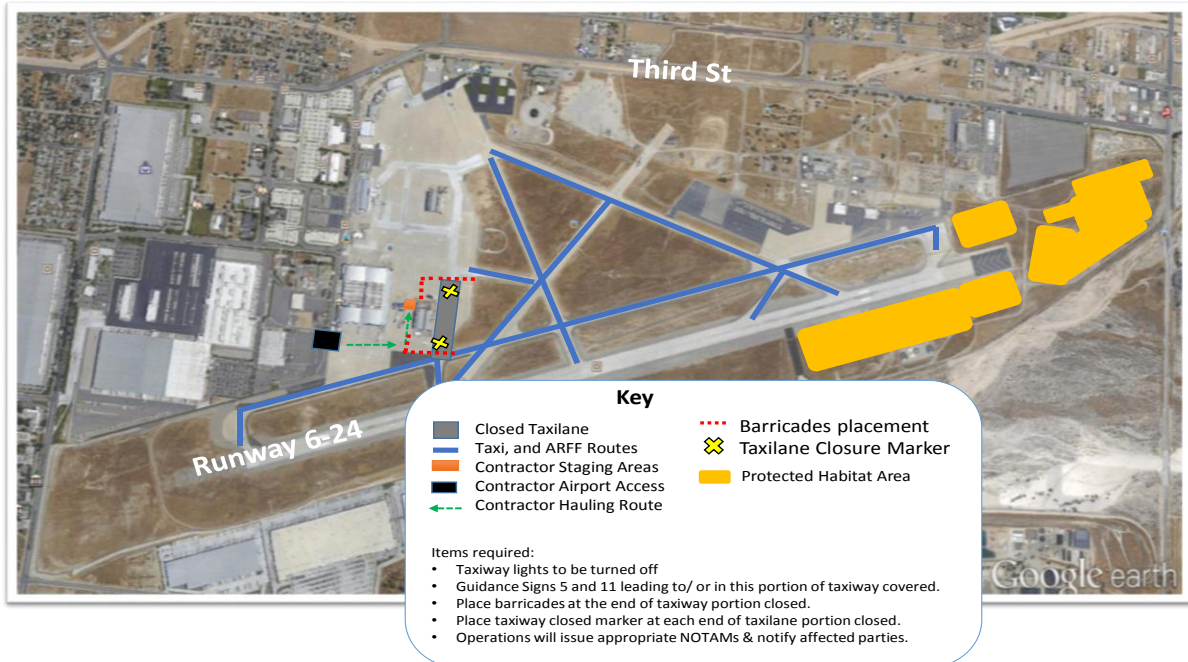


Exhibit A
Hazard Marking and Lighting



Construction Safety Flag



Low-Profile Barricade 28"



Traffic Cone with 6" band of red retro-reflective material



Taxiway Closed Marker



Vehicle Beacon

Exhibit B

List of Responsible Representative/Points of Contacts

List of Contacts: Names, Position, Organization, Telephone Number